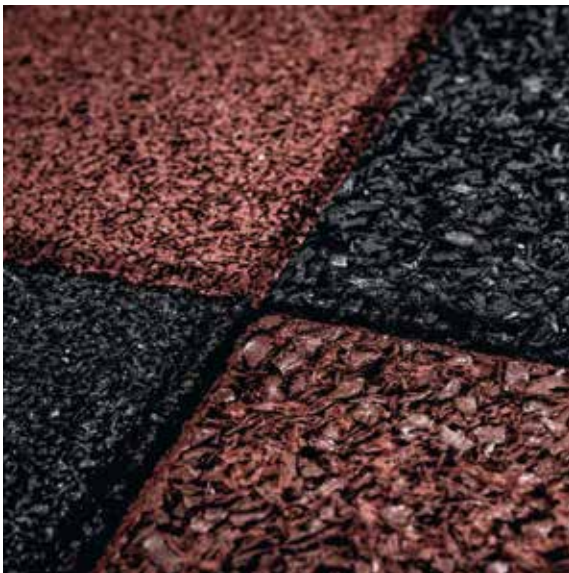


safety systems for riding and
EQUESTRIAN SPORTS





SUSTAINABLE MATERIAL

Conradi+Kaiser has been producing floor and boundary systems as well as covers made of high-quality rubber granulate material for several years. The rubber granulate material that Conradi+Kaiser uses for making its products is derived from old tires and thus helps to reduce the enormous environmental impact caused by combustion. Depending on the intended use, the material can be processed into highly dense or permeable products.

The recycled material is perfect for use in animal husbandry: it is elastic, slip-resistant, hard-wearing, and easy to care for. This way, the hoof and ankle joints of the animals are relieved of pressure, and firm footing in stables and alleys is guaranteed. In addition, respiratory diseases are reduced, because on account of the ground being soft less litter is required, which improves the air quality in stables.



HORSE HEALTH PRODUCTS

With its extensive and innovative range of equestrian equipment, Conradi+Kaiser specifically caters to the special requirements of horse keeping. With knowledge, experience, and competence in the field of rubber granulate products a well-coordinated team develops classics and innovates everything for the horse sector: wall and boundary systems as well as floor systems for boxes, stable alleys, washing areas, paddocks, riding arenas, and guided tours.

The top priority in product development is to provide horses with an environment that resembles their natural habitat while giving them the best safety possible.



MADE IN GERMANY – HIGH QUALITY FOR HORSE & RIDER

The focus for Conradi+Kaiser always rests on the needs of horse and rider. End-to-end, our products are manufactured, tested, and refined in Germany.

The brand of Conradi+Kaiser stands for innovative product developments, well thought-out design, precise production, and reliable quality assurance. This way, high-end products of supreme quality are created – optimal products which in riding and equestrian sports are essential and much sought after.

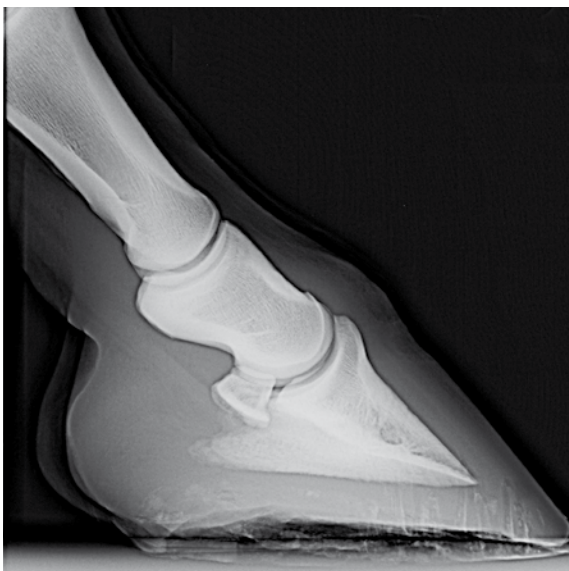




GROUND- SYSTEMS

BY CONRADI+KAISER





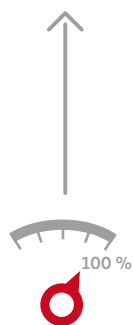
YOUR ADVANTAGE: HEALTHY HORSES

The complex locomotors system of horses is subjected to considerable strain during their whole lifetime. Particularly in the field of competition horses the physical stress on tendons and ligaments is very high. The most common cause of tedious injuries is squashy, rough or even slippery ground. In close cooperation with veterinarians and physiotherapists Conradi+Kaiser have developed ground systems that absorb the weight of the animals and thus minimizes the point loading on hooves and joints. Standing on a slightly springy surface obviates muscular hardening and relieves shoulder joints, carpal joints and hock joints. Easy and sanitary cleaning of these systems diminishes the development of microbes, which in turn prevents the formation of inflammations and putrefaction of the hooves.



YOUR ADVANTAGE: COMFORT

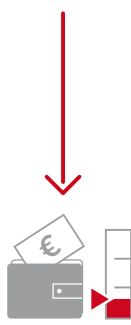
The anatomy of horses is in favour of movement in the open air. In their natural environment they move forward steadily and slowly while grazing. In the conventional indoor housing of horses however, allergic reactions and respiratory diseases may occur. By using the ground system of Conradi+Kaiser you can reduce the cost of bedding and the resulting work by up to 70%. The improvement of the air quality is a lasting investment in the health of your animals. Conradi+Kaiser have the perfect ground systems also for other areas, in which your horses remain frequently. For horse walking units and paddocks we offer low-wear and non-slip systems, that will withstand continuous loading without damage.



BENEFITS



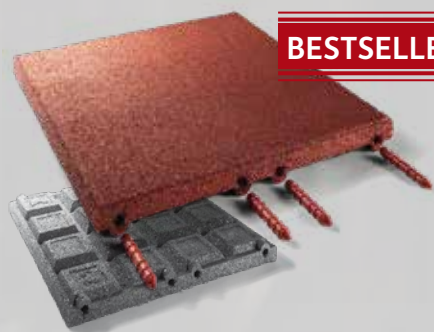
QUALITY



COSTS

YOUR ADVANTAGE: COST-EFFECTIVENESS

The anatomy of horses is in favour of movement in the open air. In their natural environment they move forward steadily and slowly while grazing. In the conventional indoor housing of horses however, allergic reactions and respiratory diseases may occur. By using the ground system of Conradi+Kaiser you can **reduce the cost of bedding and the resulting work by up to 70%**. The improvement of the air quality is a lasting investment in the health of your animals. Conradi+Kaiser have the perfect ground systems also for other areas, in which your horses remain frequently. For horse walking units and paddocks we offer low-wear and non-slip systems, that will withstand continuous loading without damage.



BESTSELLER



ELASTIC SLAB 40

500 x 500 x 40 mm

The stable mat 40 is a higher compressed elastic slab.

Due to its barrier-free use, its slip-resistance and the easy cleaning, it is perfect for areas used by horses.

- permeable
- higher compressed
- slip-resistant
- soft bedding layer:
joint friendly
- **Areas of application:**
Washing-bays

Horses should feel safe in their environment. Floor coverings in particular play a major role in providing the best possible protection for the animals' sensitive hooves and joints. Permeable flooring systems can be used in stable aisles and washing areas. A drain should be installed under the slabs so that liquids are drained away directly.

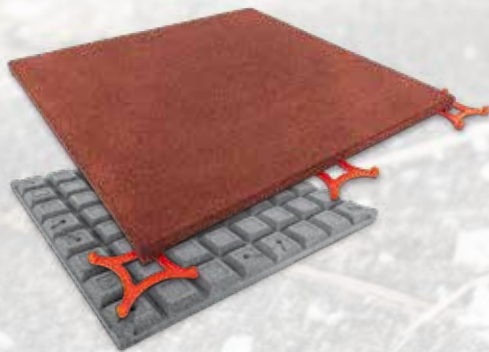


ELASTIC SLAB 45

500 x 1000 x 45 mm

The new Elastic slab in 500x1000 mm format is stable and secure in position. The drainage on the underside of the slab prevents waterlogging. Thanks to its thickness of 45 mm, the slab is particularly insulating and provides a pleasantly warm surface. The slab is highly compressed and very abrasion-resistant.

- permeable
- Reduced straw bedding
- Form-closed interlocking by four-pin clips
- **Areas of application:**
Stable alleys, Washing-bays,
Paddocks, Pathways



ELASTIC SLAB 45

1000 x 1000 x 45 mm

Because of the drainage layer underneath these elastic slabs are particularly springy and permeable. Due to their thickness of 45 mm these slabs provide stronger insulation, which in turn makes for a more comfortable floor temperature and a more stable footing. Can be laid on all subsoils.

- permeable
- higher compressed
- Reduced straw bedding
- Form-closed interlocking by four-pin clips
- **Areas of application:**
Washing-bays

Flexible floor coverings are perfect for horse stalls: the hoof mechanism remains intact, which results in better blood circulation and less damage for the horses. Still, the non-slip surface allows a good grip when rising from the floor and means the horses move in the box free of fear.



ELASTIC SLAB

1000 x 1500 x 45 mm

Heavily strained areas in equestrian facilities can be durably paved with the elastic slab sized 1000 by 1500 by 45 mm. The large format provides a high degree of position stability, preventing displacement of the individual slabs even without connecting clips. Bonding here and there, however, is recommended.

- permeable
- Largest slab in the product line:
Quick laying and high degree of position stability due to heavy net weight.
- **Areas of application:**
Pathways, Washing-bays



STABLE SLAB 18

1000 x 1500 x 18 mm

The innovative flooring made from hard-wearing rubber is easy on the hooves and joints of companion animals. It is consistently soft all year long and is normally installed in stables and in veterinarian clinics.

- Impermeable
- Less respiratory diseases due to less straw bedding
- Highly resilient
- Trafficable for agricultural machines
- **Areas of application:**
Boxes, Stable alleys



In stables with a drainage slope there is the possibility to install a gulley next a side-wall. In this case a skid-resistant and non-permeable ground system is the choice. Urine and other liquids are drained over the surface and directly removed from the stable. Thus there will be no development of unpleasant odours.



DOUBLE-T PAVER HIGHER COMPRESSED

200 x 160 x 43 mm

The double-T is the classic in the area of flooring for stable alleys. It is easy to sweep and ensures a durable homogeneous surface stabilisation. The small format paver allows the design of curved surfaces.

- Quick and easy laying
- Form-locking interconnection
- Skid-resistant
- **Areas of application:**
Horse walking units

higher compressed

Floorings, which are easy on the joints, support a sustained health of horses. Particularly in horse walking units the animals must be able to move without skidding and without fear. In order to relieve the point loading on the joints, a springy ground system is needed. The wear-resisting ground systems by Conradi+Kaiser are the optimal solution for the heavily stressed application in horse walking units.



DOUBLE-T-SLAB

565 x 500 x 23/43 mm

The double T slab is even quicker and easier to install. The large-format elements interlock with each other and are a good alternative for repairing or renewing damaged floors. With a thickness of 43 mm, the slabs can be combined with the double-T pavers and the corresponding supplementary blocks.

- Available in 2 heights:
43 and 23 mm
- Slip-resistant
- **Areas of application:**
Pathways and Stable alleys

Wet floors imply a high risk of injury for horses. Their horseshoes let them skid easily on wet surfaces. The results are fractures, ruptures and strain traumata. Conradi+Kaiser offer ground systems and flooring, that drain water quickly and thereby minimize the risks of skidding and getting hurt. Also, if installed in solarium-bays, these springy flooring systems provide non-skid and comfortable surfaces for the horses.



RESISTANT TO ABRASION

solid rubber



DOUBLE-T IMPERMEABLE

200 x 160 x 43 mm

As a flooring for the inside of washing bays it is the double-T paver made from solid rubber, which is principally used. It is impermeable and skid resistant. Furthermore, it provides a durable surface, resistant to urines, and safe for horses' movements. Simple cleaning and resulting cleanliness make it an indispensable product for equestrian establishments.

- Impermeable
- Surface resistant to abrasion
- **Areas of application::**
Washing-bays

WASHING-BAYS



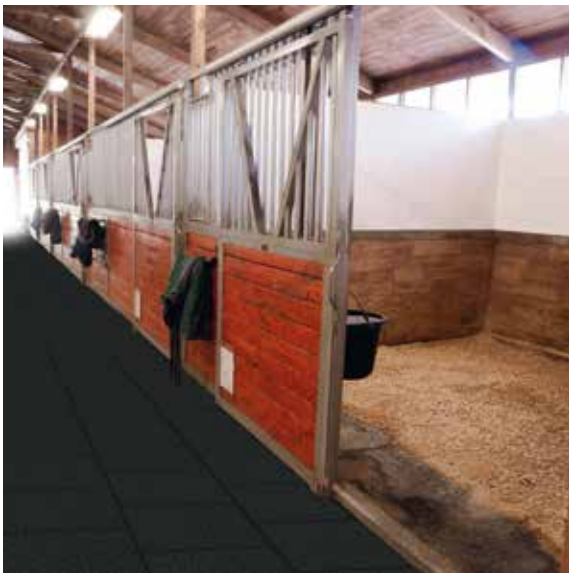




WALL- SYSTEMS

BY CONRADI+KAISER





YOUR ADVANTAGE: SOUND-ABSORBING

Walls in riding stables are subject to heavy stress as well. Hooves are kicking out against partitioning walls or against concrete. The risk of injuries increases for the horses. The wall elements by Conradi+Kaiser have a sound-absorbing surface, moreover, it is slightly springy, thereby providing lasting protection for the horses' joints and for the wall elements as well. The kicking out against the stable walls will cease before long, because the desired acoustic effect fails to appear.



YOUR ADVANTAGE: KICK-ABSORBING

Kicking out against stable partition walls or against concrete is not only very noisy, it can be quite dangerous for the delicate joints of the animals. The wall elements by Conradi+Kaiser absorb the kicks with an additional slight resilience, when horses kick against them with full power. This reduces the risk of injuries, also when a horse cramps itself in its box.



YOUR ADVANTAGE: COST EFFECTIVE

Rubber partition walls are an investment in the future: Almost indestructible and moreover easy to clean they will be functionally and optically immaculate even after years. The main advantage: Laborious maintenance work is unnecessary. Simply spray-wash them with a high-pressure cleaner - shiny again. Time-consuming painting of the elements becomes obsolete.



INSULATING

The stable partition wall element is convincing because of its high usefulness. When horses kick out against the partition walls, it will be almost noiseless and because of the sound-absorbing effect for the horses it will most probably cease altogether before long. The risk of injury decreases accordingly.

The absolutely innovative partition walls are the fast-seller for riding stables! Only a few weeks after the introduction on the market, operators of riding arenas have signalized their satisfaction. These stable wall elements are one of the rare real innovations in the furnishing of riding arenas. They imply an upgrading of the entire installation and ensure a pleasant appearance.



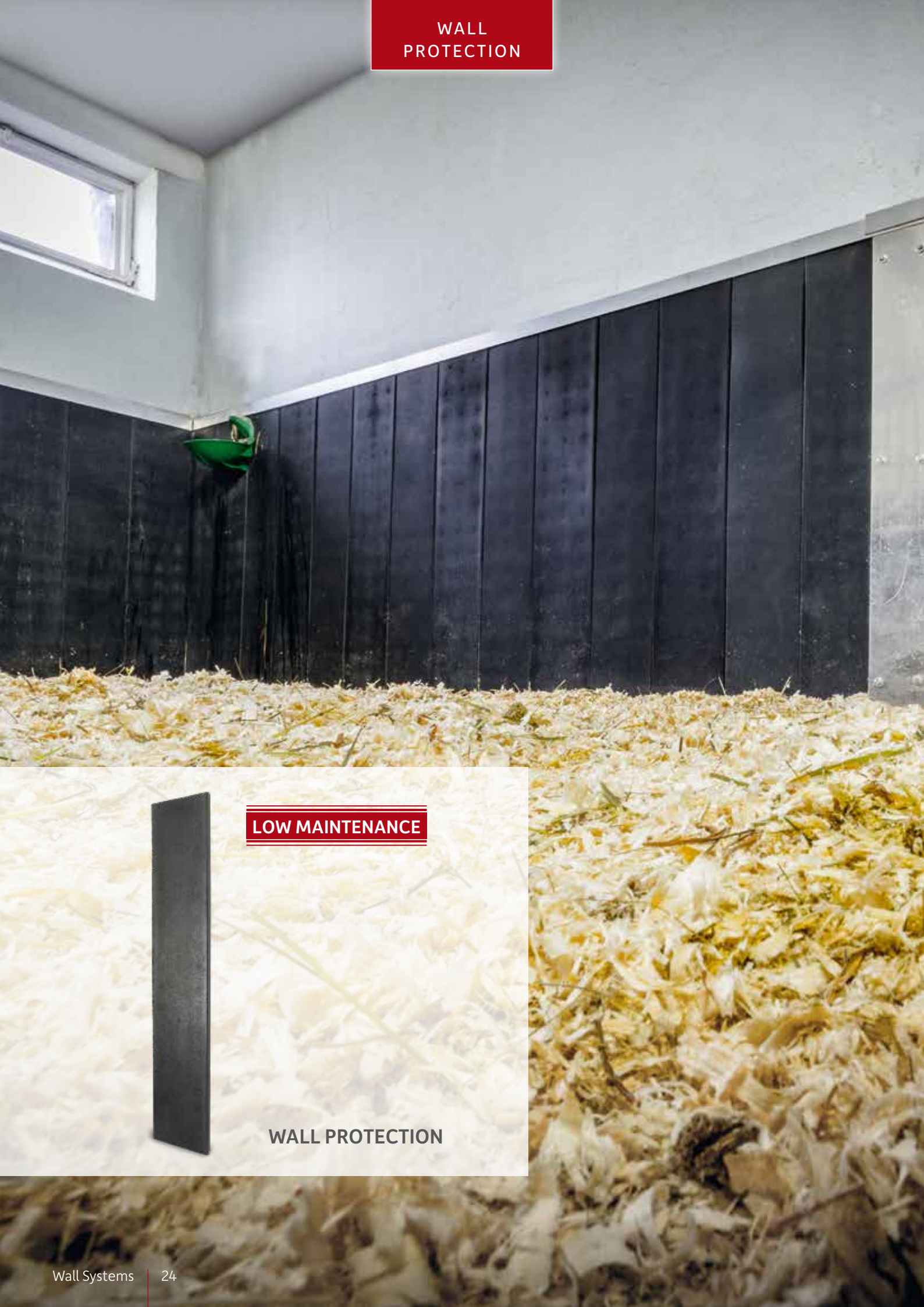
HORSEBOX WALL ELEMENT

135 x 38 x 1290 mm

For these wall elements a metal core is coated with new caoutchouc. This is the basis for the stable walls of Conradi+Kaiser. They offer a high degree of stability, are sound-absorbing and easy to clean. The wall element of new caoutchouc is simply inserted into the existing partition systems - a quick and easy upgrading of stables.

- easy to clean or to paint, if required
- insulating
- simple installation
- permanent high-quality appearance of partitions and stable alley

WALL
PROTECTION



LOW MAINTENANCE

WALL PROTECTION

Unfortunately concrete walls imply a high risk of injury for horses, when they kick against them with their hooves or joints. The new wall panelling by Conradi+Kaiser offer sound- and shock-absorbing protection in horse stables.

They are a convincing solution because of their simple installation and high effectiveness.



WALL PROTECTION

240 x 40 x 1290 mm

Kicking out with their hooves against concrete walls is not only very noisy, it is also very dangerous for the delicate joint of the horses. In order to protect the walls as well as the hooves of the horses rails will be fixed to the walls, which will hold the wall protection elements of Conradi+Kaiser. Such an installation will provide lasting protection.

- easy to clean, can be painted, if required
- insulating quality
- simple installation
- long-lasting high-quality appearance of stables and stable-alleys

Off-the-shelf fence systems for paddocks provide the horses with generous free moving space beside their neighbours. In order to avoid injuries when playing or wrangling Conradi+Kaiser offers an effective rubber fence-facing.

FROST-PROOF



PADDOCK FENCE

1430 x 9 x 1000 mm

From now on paddock fencing can be upgraded in a simple way to resist kicking out. The fence facing will prevent injuries from kicking. The facing consists of impermeable new caoutchouc so that the kicking out against these partitions will be almost noiseless.

- Simple installations on existing fence systems
- Impermeable soft material
- Frost resistant
- **Areas of application:**
Paddocks

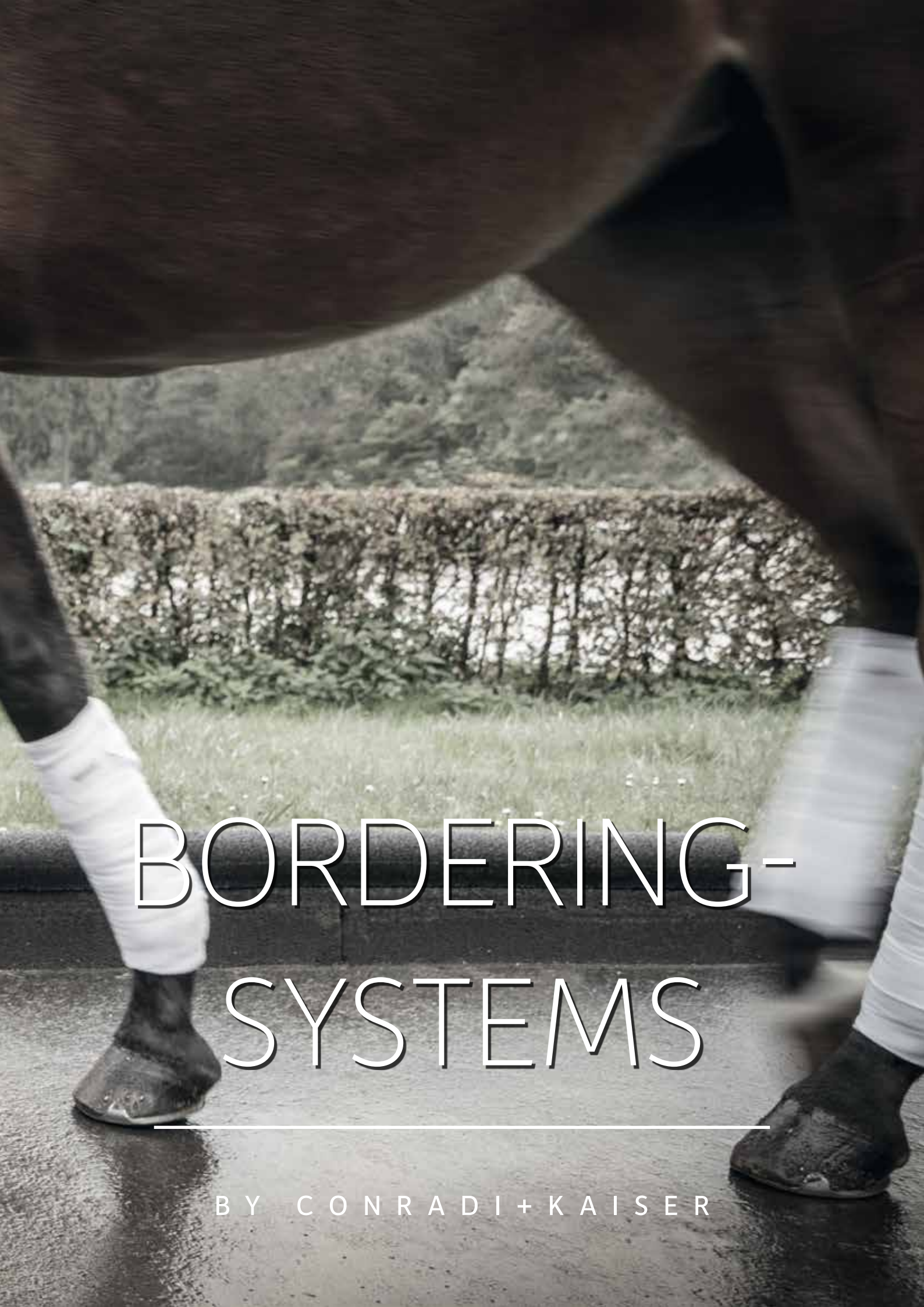


Paddock
Protection



SIMPLE INSTALLATION





BORDERING- SYSTEMS

BY CONRADI+KAISER





SAFE BORDERING OF RIDING AREAS

Durable and safe bordering of riding areas is essential for the well-being of horse and rider and for their safety as well. Particularly when tumbling, injuries are often caused by sharp-edged delimitations. Bordering elements by Conradi+Kaiser, made from rubber granulate, have an elastic surface finish, making them perfectly suitable for equestrian sport installations, where extreme robustness is required and awareness of possible accidents at the same time.



SAFE BOUNDARIES FOR LANES AND ALLEYWAYS

They separate the inside from the outside and provide for gentle and gracefully designed transitions. The bordering systems made from recycled caoutchouc reduce the risk of injuries for horse and rider, or, in the case of palisades, can serve as a comfortable seating at the same time. Using lane bordering systems by Conradi+Kaiser, your creative freedom is without limits.



ARRANGEMENT OF SAFE RIDING FACILITIES

The cubes by Conrado+Kaiser are the little heroes in every-day use. They are helpful in all places, where animals could hurt themselves stepping onto sharp-edged or hard objects. The plant containers or seating made from rubber granulate don't take offence at lighter or even harder contacts and keep their shape.



CUBE

400 x 400 x 400 mm

The cube is a real all-rounder, because it is virtually all-purpose. Whether as a mounting step in riding arenas and in stable alleys, or just as a seat, the cube is visually appealing anywhere. And the best of all: Its heavy weight precludes that someone accidentally takes it along, or that horses turn it over while being mounted or hurt themselves.

- Shock-absorbing
- Seating accommodation
- Mounting aid
- **Areas of application:**
Riding arenas, stable alleys,
spectator areas



Appealing seats on the perimeter of the show-ground can be provided using the cubes and polygons by Conradi+Kaiser. These elements made from rubber granulate look great, dry quickly and virtually keep themselves clean. Perfectly suitable for riding arenas, because even delicate hooves are relatively safe when kicking out against these elements.



CHAIN ELEMENT 1000

1150 x 150 x 400 mm

Maximum safety for horse and rider can be achieved by the aesthetically pleasing design element for the bordering of riding arenas. These elements are smoothly interlocking and dimensionally stable because of their heavy weight. For horse hooves they are not a rigid barrier between the riding arena and the surrounding and even in the case of a downfall the weight of horse and rider is slightly cushioned.

- High dimensional stability
- Large scope for creativity
- Minimising the risk of injuries
- Quick installation on hardened and loose subsoil
- **Areas of application:**
Riding arenas, Pathways,
Guiding systems



PALISADE

Ø 250 x 400/600/800/1000 mm

Safeguarding of slopes and surroundings for riding areas are the typical fields of application for the palisades. The elegant design with the notched groove makes possible a tight interlocking connection of the individual palisades. The soft material makes a comfortable seating.

- Integrated soil anchor for high stability
- Five palisades per meter
- High stability when used for safeguarding of slopes
- **Areas of application: Spectator areas, Planting areas and slopes**



Safeguarding of slopes is particularly important in areas, where equestrian sports take place, because many riding facilities have to cope with a hillside situation. Whether in the areas of the spectators or in those of the horses, Conradi+Kaiser offers numerous possibilities of safeguarding for slopes, which also take into account the delicate joints of horses.



HILLSIDE PALISADE

300 x 150 x 1000 mm

The long soil anchor of the hillside palisade provides for a high rate of stability on slopes. Riding arenas or spectator areas can therefore be integrated directly into hillside slopes. The inherent stability of the material is perfectly suitable for riding arenas, because of the flexibility of the rubber granulate, prevents serious injuries of the horses legs.

- very robust
- abrasion resistant surface
- **Areas of application:**
Riding arenas, Spectator areas



Long ground anchors = high stability on slopes



CONCRETE PATH BORDERING WITH GRANULATE COATING

1000 x 60/80 x 295 mm

Sometimes the enclosure of lanes demands a higher degree of stability. Lanes which are constantly under high strain should be stabilized by concrete enclosures. In order to avoid injuries, the concrete border stone comes with a skid resistant coating of rubber granulate.

- High degree of stability because of the concrete core
- Quick installation
- Injury inhibiting surface
- **Areas of application:**
Lanes, Lawn areas



GRANULATE COATING

1000 x 80 x 80 mm

1000 x 100 x 100 mm

Existing projecting border stones imply a high risk of injury for humans and animals. They are tripping hazards and horses hooves can easily skid on the narrow concrete strips. These edges can quickly and safely be improved by the casings of rubber granulate in order to avoid bad injuries.

- Supplementary casing of existing bordering elements.
- Anti-skid property
- Quick and easy installation
- **Areas of application:** Lanes, Lawn areas, Bordering of riding arenas

Paths and lanes within riding installations have to bear constantly the weight of the animals and therefore need stable enclosures. Bordering elements made from rubber granulate are particularly well suited for this application, because they do not only have a high dimensional stability, but they are also skid resistant. The soft material prevents the horses' hooves to slip off as well as scrapes or worse injuries by the rigid concrete.



PATH BORDERING

1000 x 50 x 250 mm

1000 x 80 x 300 mm

Besides the bordering of riding arenas connecting lanes and lawn areas also need to be enclosed, so that they might be easily looked after on the one hand, and provide for the highest possible safety for the animals on the other hand.

The lane enclosing elements made from rubber granulate are durably weather resistant, quickly installed and provide flexible protection for hooves, for instance against slipping off or against spraining.

- Flexible bordering
- Optional available with reinforcing steel to create curves
- **Areas of application:**
Lanes, Lawn areas



EXPERTS FOR EQUESTRIAN FLOORING SYSTEMS

Business partners, as well as owners of equestrian centres worldwide rely on the know-how of Conradi+Kaiser. For more than 30 years, we have been leading in the development of unique products for animal husbandry and have developed innovative products according to the latest medical findings.

Conradi+Kaiser products can be found in riding centres around the world. In Abu Dhabi, high class Arabian horses are training on our flooring-systems, in Germany, horsemen as Paul Schockemöhle, as well as the national and state training centre of Rhineland-Palatinate are working with the innovative C+K products.



CONTACT

Service-Hotline 02689 9580-0



Conradi+Kaiser GmbH
Gewerbegebiet Larsheck
56271 Kleinmaischeid
Tel. +49 (0) 2689 9580-0
Fax +49 (0) 2689 9580-50
info@conradi-kaiser.de
www.conradi-kaiser.com

2/2025 – All rights and product modifications reserved.
We will not assume liability for misprints. Deviations in colours are technically
conditioned and do not constitute reason for complaints.

Credits:

S. 6/7 istock.com/Lorado; S.7 oben istock.com, larr;
S.16/17 istock.com stocknshares, S. 18/19 istock.com, Zocha_k;
S. 21 oben istock.com ChrisBoswell; S.30/31 istock.com Somogyvari



Conradi+Kaiser GmbH
Gewerbegebiet Larsheck
56271 Kleinmaischeid
Tel. +49 (0) 2689 9580-0
Fax +49 (0) 2689 9580-50
info@conradi-kaiser.de
www.conradi-kaiser.com